

980 SERIES PHY & PROTOCOL AUX CHANNEL ANALYZER MODULE



980B with Phy & Protocol Aux Channel Analyzer

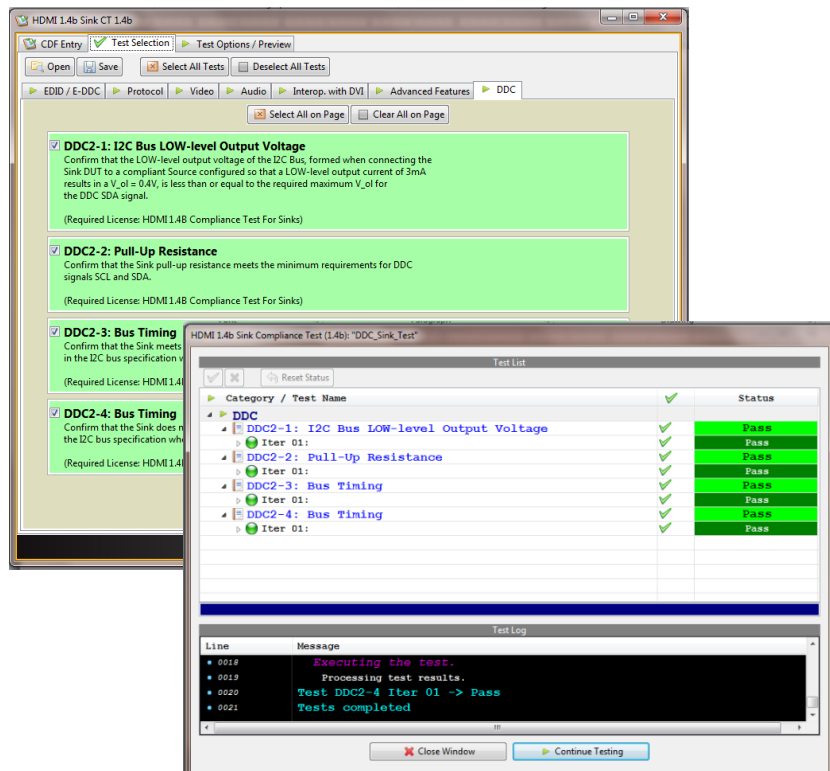
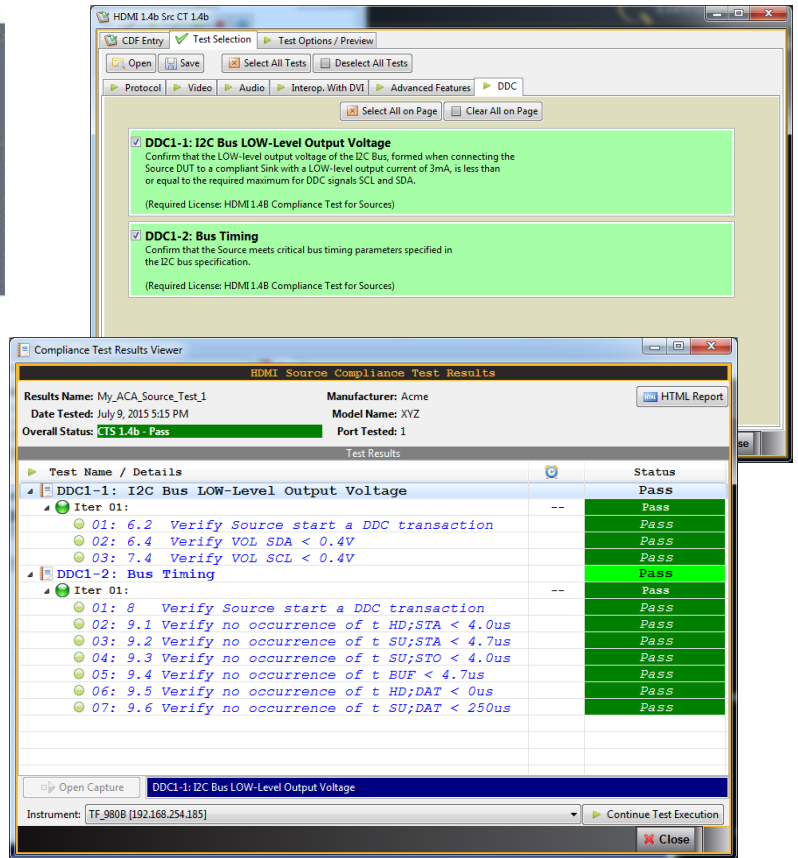
980 Phy & Protocol Aux Channel Analyzer Module

Introducing the 980 HDMI Phy & Protocol Aux Channel Analyzer module for testing DDC bus compliance. The initial release of the new module supports compliance testing of the HDMI DDC bus voltage and timing parameters in accordance with the HDMI 1.4b Clarification Version 1.04 – May 1, 2014. Future software releases for the module will support functional tests and compliance tests on other HDMI auxiliary channels.

The 980 Phy & Protocol Aux Channel Analyzer module's DDC compliance tests enable you to identify compliance failures early in the development cycle. The solution is an ideal for pre-testing and self-testing (where permitted) your HDMI 1.4 & 2.0 source or sink device. Pre-testing and self-testing reduces cost of testing or retesting at an Authorized Test Center (ATC) and enables you to meet time to market requirements. You can save the results and distribute them to colleagues.

The 980 GUI design is optimized for convenient and rapid operation of the module's compliance test functionality.

The test setups for source testing and sink testing are depicted below.



980B w/ Phy & Protocol Aux Chan Analyzer module

HDMI source



980B w/ Phy & Protocol Aux Chan Analyzer module

HDMI HDTV

